



A Performance Touring Company

High Performance Suspension Systems for Passenger Cars and Sport Trucks

INSTALLATION TIPS FOR BUSHINGS

03/20/96

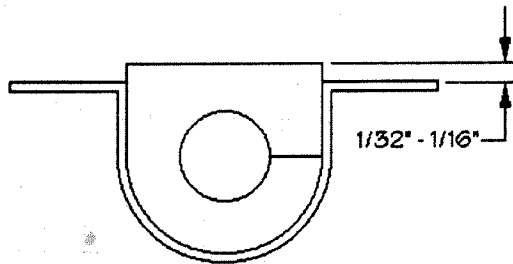
The following instructions are essential to ensure your new bushings will have a long and trouble free life.

LUBRICATION

Pre-lubricating a bushing before its installation is important because the lubrication will greatly reduce bushing noise and increase bushing life. Suspension Techniques recommends you use the grease provided in the kit, or a waterproof grease containing molybdenum disulfide (moly). This will help protect the inside surface of the bushing and will last longer than most other types of grease. Thoroughly lubricate the inside of the bushing with this grease.

INSTALLATION

Make sure a maximum of $1/32"$ to $1/16"$ of the bushing is showing when you install it into the bracket. See the diagram below. If the bushing is showing more than $1/16"$, use a belt sander or a sheet of coarse grit sand paper to shave it down to the proper height. In most applications you may refer to your original equipment anti-swaybar to locate the proper place the new bushing belongs on your new Suspension Techniques Anti-swaybar.

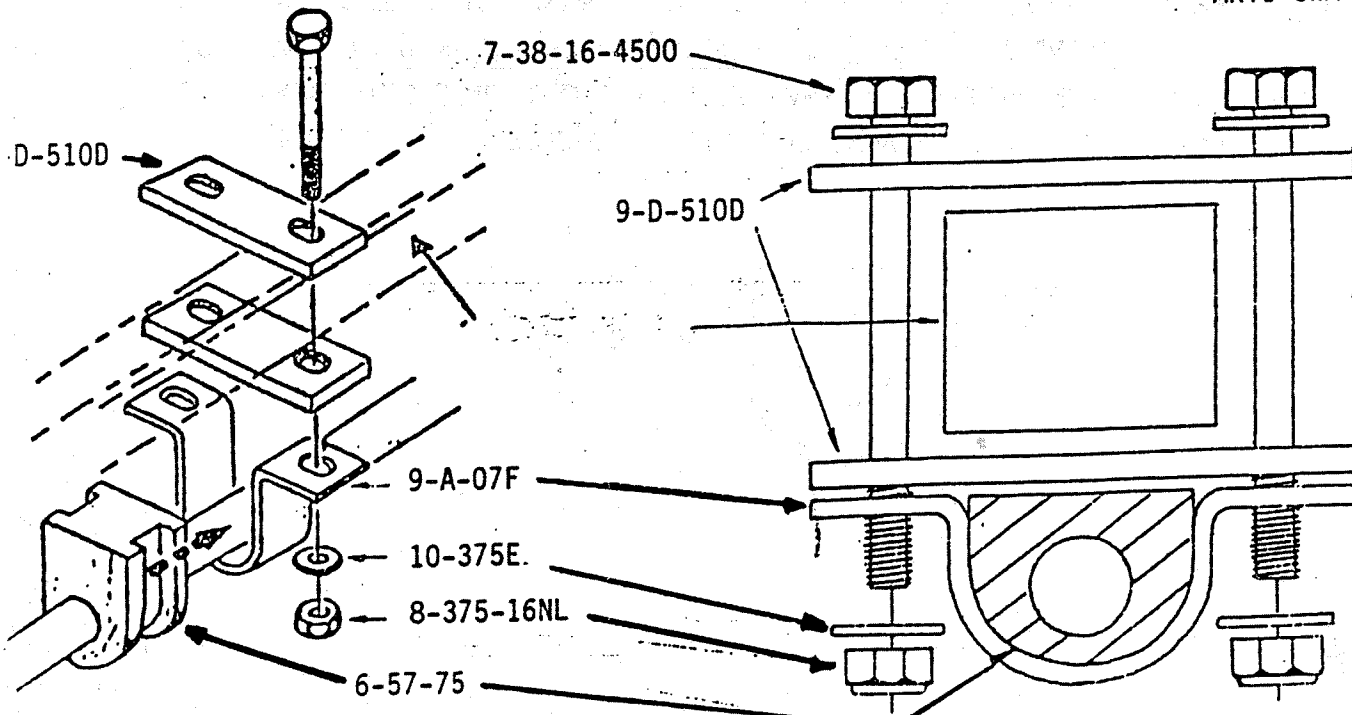
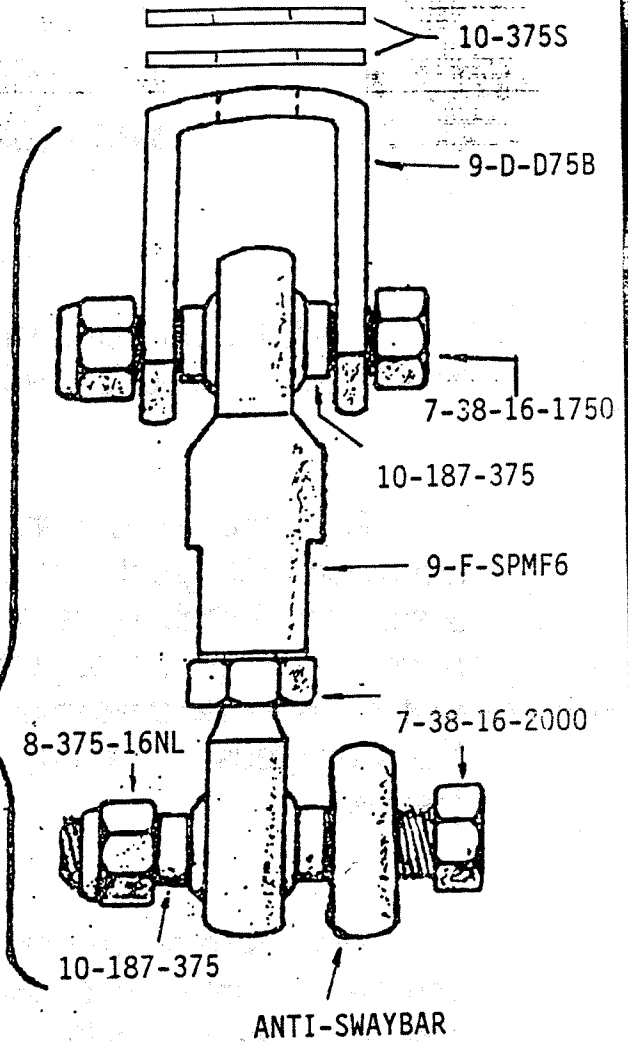
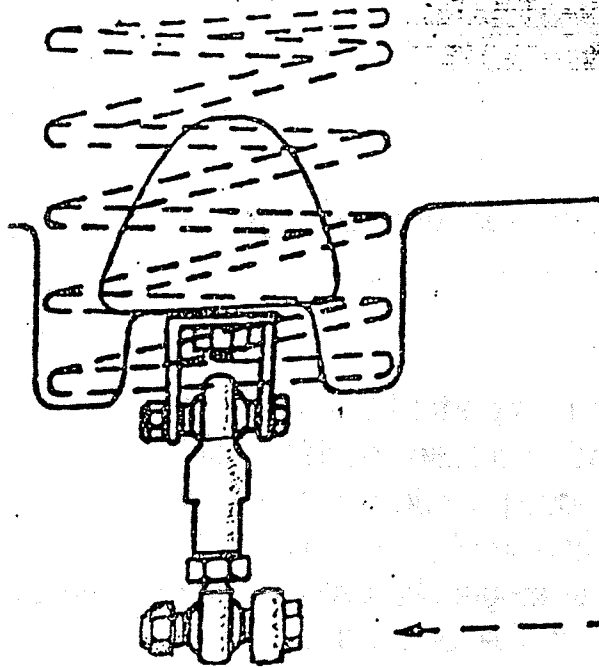




A Performance Touring Company

High Performance Suspension Systems for Passenger Cars and Sport Trucks

B-04506-RA



INSTALLATION INSTRUCTIONS continued...

New Part Number

B-04506-RA

#2-045

10. Replace wheels and torque lug nuts to approximately 75 ft. lbs.

Installation is complete. Check all fasteners for proper torque.

ADJUSTMENT PROCEDURE:

To increase oversteer, move spherical bearings to holes furthest from ends of anti-swaybar.

To increase understeer, move spherical bearings to holes closest to ends of anti-swaybar.

CAUTION: Do not drive vehicle until both front and rear anti-swaybars are installed.



A Performance Touring Company

High Performance Suspension Systems for Passenger Cars and Sport Trucks

INSTALLATION INSTRUCTIONS

B-04506-RA

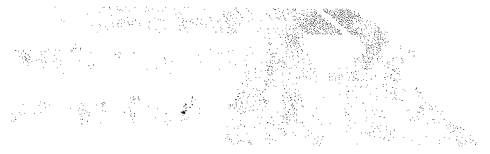
New Part Number
#2-045

Congratulations for being selective enough to use a Suspension Techniques anti-swaybar. We have spent many hours developing every line of our anti-swaybars so that you will receive maximum performance with minimum difficulty in installation.

Please take the time to read the installation instructions and check over the parts list to be sure that you have received all parts necessary to complete installation.

DO NOT WORK UNDER VEHICLES HELD UP ONLY BY A JACK. USE SECURE JACK STANDS.

1. Jack up rear of vehicle and place jack stands securely under chassis. Remove wheels.
2. Locate bumpstops (one inside each coil spring) and remove nuts from bottom of each bumpstop.
3. Place two large flat washers on top of each 3/4" U-bracket. Fasten U-bracket to the bottom of each bumpstop using the 3/8" lock washer and your original equipment nuts removed in step 2.
4. Position the legs of each U-bracket parallel with vehicle and torque bumpstop nuts to approximately 18 ft. lbs.
5. Thoroughly lubricate the inside of your new hiperthane bushings using a high grade lithium or silicone based wheel bearing grease. Place bushings on your new Suspension Techniques anti-swaybar approximately 1/2" from the bends.
6. To determine proper mounting position of anti-swaybar, lay anti-swaybar on flat surface, center portion touching surface and arms pointing toward the rear of vehicle.
7. Assemble spherical bearings to the shortest length and fasten to U-brackets using the 1-3/4" bolts, 3/16" spacers and nylock nuts. Torque nuts to approximately 18 ft. lbs. Refer to diagram.
8. Fasten remaining ends of spherical bearings to the outside of anti-swaybar in center holes using 2" bolts, 3/16" spacers and nylock nuts. Torque nuts to approximately 18 ft. lbs.
9. Swing center portion of anti-swaybar up to subframe and fasten using remaining hardware. Refer to diagram. Torque nuts to approximately 14 ft. lbs.



070

070

070

070

070

070

070

070

070

070

070

070

070

070

070

070

070

070

070

070

070

070

070

070

070

070

070

070



A Performance Touring Company

High Performance Suspension Systems for Passenger Cars and Sport Trucks

51090

PARTS LIST
(P-2-045)

2-045

BUSHINGS

2 - 6-57-75

PIVOT BUSHING

BRACKETS, PLATES

2 - 9-A-07F

BUSHING BRACKET

2 - 9-D-D75B

U-BRACKET

4 - 9-D-510D

PLATE

NUTS, BOLTS & WASHERS

4 - 7-38-16-4500

4-1/2" HEX HEAD CAP SCREW

2 - 7-38-16-2000

2" HEX HEAD CAP SCREW

2 - 7-38-16-1750

1-3/4" HEX HEAD CAP SCREW

8 - 8-375-16NL

NYLOK NUT

10 - 10-375E

3/8" SAE FLAT WASHER

4 - 10-375S

3/8" USS FLAT WASHER

2 - 10-375L

3/8" LOCK WASHER

BEARINGS, SPACERS

2 - 9-F-SPMF6

SPHERICAL BEARING ASSEMBLY (MALE +
FEMALE SPHERICAL BEARINGS + JAM NUT)

8 - 10-187-375

BEARING SPACER